



CACTUS WREN

P.O. Box 183
Green Valley AZ 85614
www.gvang.org

February 2007

LETTER FROM THE PRESIDENT

Hi Happy Stitchers

I am writing this message the morning we woke up to a blanket of white stuff! Here we live in Arizona to avoid all this messy stuff. At least we don't have to shovel the snow, but I laughed last night when they talked about closing schools!!

The Threaded Treasures Committee has been working hard and we expect this to be an exciting show. However, we do need more entries. The deadline has been extended to Feb.14th, the day of our meeting. You will find another entry form in this newsletter with Ann's address on it. If you need extras you may copy it. Also you will find the form to fill out to attach to your entry. Be sure that is done.

Registration will be Feb. 23 from 9 to 11. Please bring your items to the show within that time frame because it will take the set up committee many hours to display the pieces.

I hope everybody has sent in their money for the Spring Luncheon. This is our Annual Meeting and this board goes out and the new board comes in. I have at least two more Opportunity Baskets and a surprise item. A generous member has donated an item too large to fit in a basket but it will be a useful item and even if you have one you can always use two. Our lovely harpist will entertain us again. She should come with her wings on but she doesn't have them stitched yet.

ELECTED BOARD

PRESIDENT	Phyllis Richardson
VICE PRESIDENT	Ann Seese
VICE PRESIDENT	Judy Burgess
SECRETARY	Carol Copeland
TREASURER	Donna Lou Hetler
DIRECTOR AT LARGE	Eloise Fredrickson

APPOINTED BOARD

HOSPITALITY	Janet Watson
KEEPER OF THE FEATHERS	Marti Harris
KEEPER OF THE RECORDS	Margaret von Kuegelgen
LIBRARIAN	Ruth Wallace
MEMBERSHIP	Muggs Tilly
NEWSLETTER	
EDITOR	Sue Swan
PUBLISHER	Susan Bumstead
	Elizabeth Farmer
PHONE TREE	Judy Kowalski
PROGRAMS	Judy Burgess
PUBLICITY	Ruth Deobler
SOCIAL	Judy Kowalski
STITCH-OUTS	Pat Phillips
WEB SITE	Margaret von Kuegelgen

BOARD MEETING

Fourth Monday of the month at Phyllis Richardson's.
• Next meeting is February 26th at 9:00 am.

MEMBERS MEETING

Second Wednesday of the month at La Posada Recreation Room.
• Next meeting is February 14th with a 9:30 social time and 10:00 business meeting.

NEWSLETTER DEADLINE

Deadline for the next issue is February 24th. E-mail Sue Swan at sueswan@msn.com or mail typed copy. Please include **CWNewsletter** in the subject line.

This newsletter has a lot of important information in it so please sit down and read it now. There are some deadlines to meet and we need to be sure we meet them.

Keep A Happy Face.
Phyllis:

**MONTHLY PROGRAMS
AND PROJECTS
FOR THE NEXT THREE MONTHS**

February Program

Ann Seese will be leading the program this month. The Morning Glory will be the program with a Valentine's gift of the kit for free to the participants. Because the piece is taken from the ANG Project Book it can only be supplied to those members who have already signed up and participate in the program. If you haven't signed up for this project, join us anyway and sit and stitch with a project of your own.

Don't forget to bring

You will need 2 pair of 8" stretcher bars, tacks, wax or thread heaven, a light colored, very fine point permanent marking pen (like a Pigma Micron .05 light brown). In addition, bring the usual stitching supplies including straight pins, tapestry needles (sizes 20, 22, 24), needles for beading (#10 quilting will work), and a laying tool. The program will run long, so please bring your lunch as well.

March Program

The March Program is our Spring Luncheon please see Upcoming Events section for details.

April Program

Look for details on the April Program in the next newsletter.

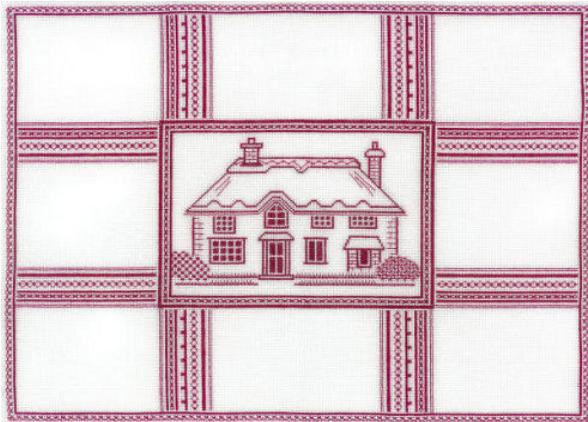
UPCOMING EVENTS

Spring Lunch

Our Spring Luncheon and introduction of New Officers and Board will be held on March 14th, our usual meeting day. It will be held at Lavender's Restaurant in the COUNTRY CLUB OF GREEN VALLEY. Social Hour begins at 11:00 and luncheon will be served at 12:00 Noon. The Menu is Tarragon Chicken Salad on a French Croissant with a Fruit Salad. Dessert is a Swiss Chocolate Mousse with a cookie. The price is \$18.00 and includes beverages. A cash bar will be available. Make checks out to Cactus Wren Chapter/ANG and forward them to Judy Kowalski on or before March 4. We look forward to seeing you there!! Opportunity Baskets will be available at \$1.00 per ticket or 6 for \$5.00.

Judy Kowalski

MYSTERY SAMPLER by Gay Ann Rogers



I thought that this would be a wonderful group project to keep us bound together by thread while we are apart during the summer months. The cost for all nine printed lessons is \$39.00 if we are signed up and paid by February 27th. You supply your own materials which will make each and everyone different. We will need at least ten people to qualify for the group pricing. I will mail each lesson on the 20th of the month. The project is a Redwork Sampler with an English Thatched Cottage in the center "window" and 8 surprise windows around the cottage. Supplies are ground fabric of congress cloth or 28 count linen. Thread - this is the time to be creative as the entire sampler is worked in one color (so make sure it's one you love). You can use Silk or Floss in a strong enough color that a single ply stitched in a double-running stitch shows up. For those of you that are on the Internet you can go directly to the website by clicking on www.gayannrogers.com and then click on group projects to read more about it.

Please contact Dale Miller if you are interested. We will need at least 10 people to get the group rate of \$39.00.

Dale

THREADED TREASURES 2007

We would like to thank those who have submitted their entries for Threaded Treasures 2007. However we have room for a few more. The Board has extended the deadline until our next general meeting day, February 14th.

We need you help - please check your stash of completed items and see if there is one you might donate for an opportunity drawing. This should be a finished item.

The Entry forms to be attached to the back of your entries are included at the end of this newsletter. For your convenience both the Entry form and the Registration form are at the end of this newsletter. Call me with questions: Rosemary, 399-3056.

The Threaded Treasures committee has decided to try something new this year. We are offering you the opportunity to sell something you have stitched and no longer have room for or may be tired of. It must be in pristine condition and priced right. You set your price. At the end of the show you will receive a check for the amount minus 10%. You will make your own price tag and attach it to the item. Please bring it in the morning of registration. If it does not sell you can pick it up at the end of the show. The following information is needed and send it to Phyllis Richardson. Give your name, phone number, size of piece and if it is framed or an object such as box, Pillow etc. The price of the item does not have to accompany this information. This information is due by Feb. 15th

TIDBITS OF NEWS

CACATUS WREN CHAPTER, THE ANG
INC.
FINANCIAL STATEMENT FOR December
2006

Checkbook balance as of November 1,
2006 \$ 6071.70

Income

Dues	48.00
Christmas Lunch	220.00
Christmas Baskets	175.00
January Kit Fee	<u>450.00</u>
 Total	 \$893.00

Expenses

Newsletter Printing	41.43
Postage	39.00
Envelopes	6.33
Members Book	4.24
Storage	30.00
Web Site	67.50
Christmas Lunch	<u>564.14</u>
 Total	 \$752.64

Checkbook balance as of November 30,
1006 \$ 6212.06

Committed funds
\$ 400.00

Operating funds
\$ 5812.06

CD# xxxxxxxxxxxxxxx0450 \$1,594.99
CD# xxxxxxxxxxxxxxx0829 \$1,054.84

Prepared and submitted 12/07/06

Donna Lou Hetler
Treasurer

MEMBERSHIP

Membership Info from ANG:

Payment of ANG National Dues

Your e-mail address will help us keep you more informed of when your dues are due. ANG wants to reach as many of our members via e-mail as possible! ANG has an ANG Web site www.needlepoint.org section for updating their member information electronically. Select the "Change of Address" line under "Member Resources". A page entitled "Update Membership Database." This can be used for adding your e-mail address to ANG database. The membership office will be e-mailing members when their dues invoices have been put in the mail. This has proved to be extremely effective with their other clients and doesn't cost anywhere near mailing reminds does. We know we have many members who do not have e-mail, but you would be surprised how many do! Let's give this a try. Help ANG help you! Be proactive and give ANG your current e-mail address!

ATTENTION WINTER VISITORS AND THOSE OF YOU WITH SECOND

RESIDENCES: Please be aware of your ANG renewal date and where you are likely to be at that time. If your are routinely at a secondary address at that time, please contact the Membership Office of ANG and alert them to this situation.!

No current dues are due this month.

DELINQUENT:

Arlene Deeds
Barbara Nemacek
Ethle Skowronski

Re-instate:

Jo Middlestead
4551 Plaza de Toros
Tucson, AZ 85750
(520) 299-2630

National will invoice members for \$33 directly. All members are to send checks for the local chapter of \$16 to Muggs Tilly.

STITCH OF THE MONTH

***Stitch of the Month
October 2002: Diamond Scotch
Stitch***

by Carole Lake

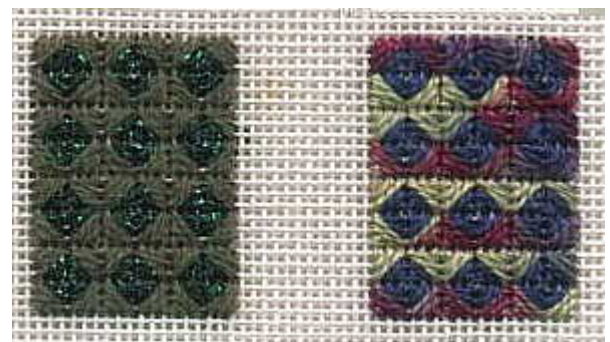
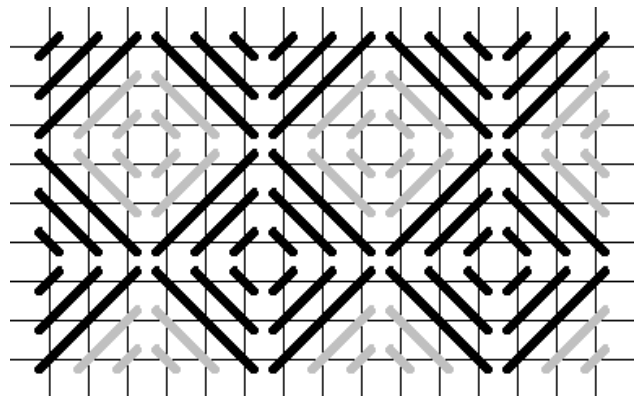
What a difference the thread makes! This is just the reversed Scotch, with the threads changed to make a pattern. This is very versatile and very attractive.

Take a look at the diagram: there are light stitches and dark stitches. I would work all the dark stitches first, then fill in the light stitches. I used two thread combinations. The left sample is Medici wool for the dark stitches and Gold Rush 14 for the light stitches. The right sample is Watercolours for the dark stitches and pearl cotton for the light stitches.

You can do lots of things with this stitch, but you have to watch out for distortion. Work it on a frame.

This makes a fabulous angel's dress or a ballgown in metallics, maybe even with a bead here and there. It makes a good background in one color and two different threads (white ribbon and white wool). It's great for geometric areas, and you can vary it like simulated upholstery in a tweed-like thread.

It's best in medium to large areas. It makes a very nice border. Vary it by making it bigger. It has a strong pattern and good texture.



Sample Stitched by Carole Lake

This page may be printed and reproduced in its entirety by ANG Chapters for publication in their newsletters.

THREADED TREASURES – 2007
Exhibit Dates: February 22, 23, 24th
Exhibit hours: 10:00 AM – 4:00 PM

General rules and guidelines. Please save this for future reference.

- 1. Exhibit entries must be stitched by a member of Cactus Wren Chapter of ANG**
- 2. Each entry must be stitched by hand using a threaded needle on a counted ground.**
- 3. Accepted entries can be in any shape, i.e. boxes, pictures, pillows, wearable items, purses, belts, standing figures, Christmas ornaments etc.**
- 4. A limit of 5 pieces total per member.**
- 5. Entries exhibited in past TT are not eligible**
- 6. Exhibit entries must be ready for display i.e. wire hangers on pictures, special stands or cases if required etc.**
- 7. Exhibitor's name, phone number and a title of piece must be attached firmly to the back of each entry. Please use form provided.**
- 8. Exhibitors are responsible for their own insurance and for the delivery and pick up of entry or they must make other arrangements.**
- 9. Cactus Wren and its committees are not responsible for accidents, damage or loss of items. Exhibitors enter pieces at their own risk**

THREADED TREASURES – 2007 EXHIBITORS FORM
One entry per item. Please, reproduce this form if needed

EXHIBITOR _____ **PHONE** _____

TITLE _____

SIZE _____ **MAY WE DISPLAY YOUR NAME** _____

TECHNIQUE

Needlepoint
 Cross Stitch
 Mixed Media
 Hardanger
 Pulled Thread
 Drawn Thread
 Miscellaneous

ENTRY TYPE

Pillow
 Framed
 Box/Object
 Christmas ornament
 Wearable
 Seasonal (which one) _____
 Other _____

Exhibitor information (optional): using 30 words or less attach a short Explanation/history of this piece, or what it means to you.

SUBMIT ALL ENTRY FORMS BY JAN. 20, 2007 TO:
ANNE SEESE, REGISTRATION CHAIRMAN
7845 N. Sandario Rd. Tucson AZ 82604

THREADED TREASURES – 2007

This is the form for the back of your entry piece

Attach to back of entry

Exhibitor _____
Phone #: _____
Item (i.e. framed piece, free
standing) _____
Size _____
Title: _____

Is entry a _____ Painted Canvas
 _____ Charted
 _____ Adaptation
 _____ Original Design

May we proudly display your name
under your entry: ___ Yes ___ No

Attach to back of entry

Exhibitor _____
Phone #: _____
Item (i.e. framed piece, free
standing) _____
Size _____
Title: _____

Is entry a _____ Painted Canvas
 _____ Charted
 _____ Adaptation
 _____ Original Design

May we proudly display your name
under your entry: ___ Yes ___ No